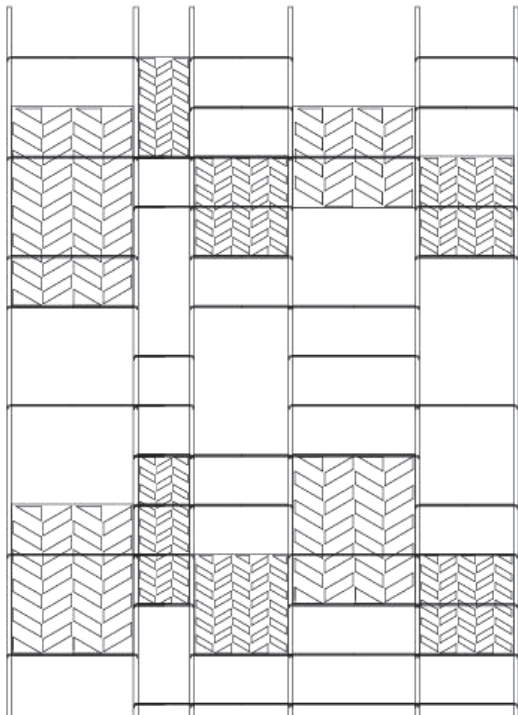




## Formative

Formative is a modular shelving system comprising steel frames, shelves and patterned panels. This adjustable wall system also functions well as a partition, defining specific areas within a space. Formative is designed to accommodate different materials, such as wood, metal and leather, alongside custom laser-cut panels, to best suit one's necessities. These organizable elements unlock Formative's countless different forms, creating an opportunity to change and adapt to different requirements along its lifetime.

PRICE: by size & fittings



MATERIALS:  
Steel

FRAME



POWDER COATED  
STEEL

DETAILS

