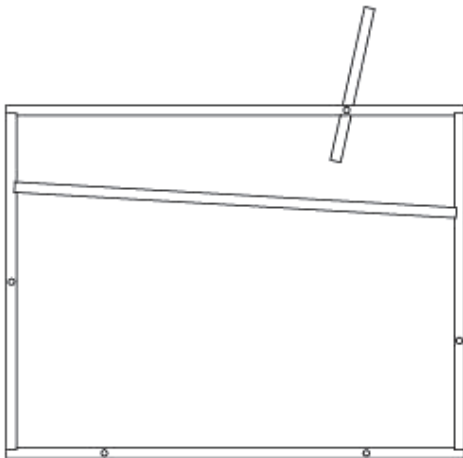




Armchair_01

From its first sketch to its execution, Armchair_01 is designed as a simple, classic and sophisticated piece of furniture. Its ergonomic structure provides support of the lower back, alongside the use of strong and flexible four-millimeter thick leather which reacts to the human body and changes accordingly over time, making it one's own special chair.

PRICE: 6,900 NIS



DIMENSIONS:

Width: 65 cm
Length: 70 cm
Height: 69 cm
Seat Height: 42 cm

MATERIALS:

Steel frame, leather/fabric

FRAME



LACQUERED STEEL

FRAME: FITTINGS



STEEL + FLAT
BRASS

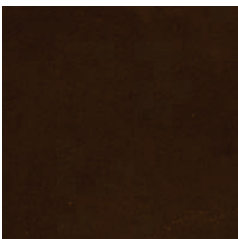


STEEL + HEX
BLACK

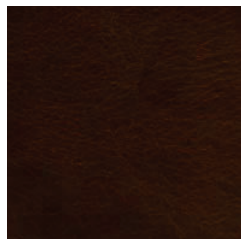


STEEL + HEX
BRASS

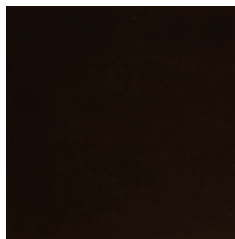
LEATHER



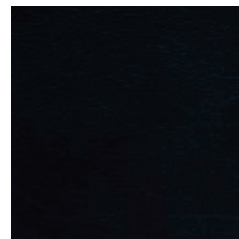
01
THICK LEATHER -
MATTE BROWN



02
THICK LEATHER -
SHINY CHOCOLATE
BROWN



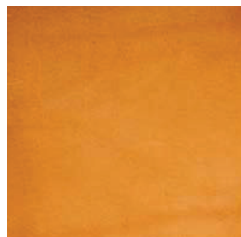
03
THICK LEATHER -
BLACK



04
THICK LEATHER -
GREY BLUE



05
THICK LEATHER -
CAMEL



06
THICK LEATHER -
TAN